



A B C D

3491.94J1 100ml
9424.1EE
9855.88E



A B C D

3492.09H1 50ml
9424.0EE
7015.20E/9806.901

Bottle:
Pump:
Cap:
pcs



A B C D

3492.10H1 75ml
9424.0EE
7015.20E/9805.28E



A B C D

3492.11H1 50ml
9424.0EE
9801.54E

1: 26.11.2014

Bottle:
Pump:
Cap:
pcs



A B C D

3492.12G1 100ml
9424.2EE
9802.02E

Bottle:
Pump:
Cap:
pcs

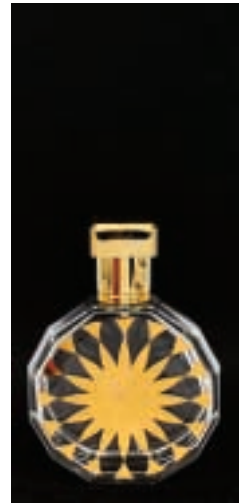
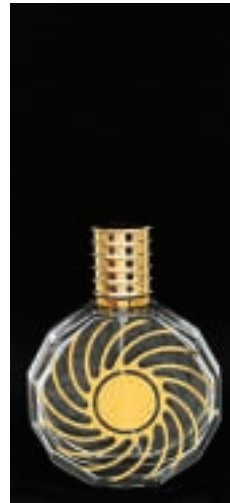
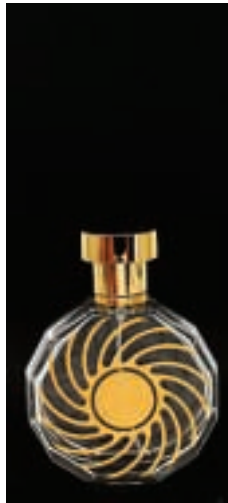


CRIMPMÜNDUNG
CRIMP NECK



<p>Bottle: Pump: Cap: } pcs</p>	<p>3491.35H1 AURORA 100ml 9424.0AA 7015.19A/9806.661 2.604</p>	<p>3491.35H1 AURORA 100ml 9424.0AA 7015.20A/9805.20A 2.604</p>	<p>3491.35H1 JUWEL 100ml 9424.0AA 9806.52A/9806.751 2.604</p>	<p>3491.35H1 SUNRAY 100ml 9424.0AA 7015.20A/9805.01A 2.604</p>	<p>3491.35H1 SUNRAY 100ml 9424.0AA 7015.20A/9805.35- 2.604</p>
---	--	--	---	--	--

2: 26.11.2014



<p>Bottle: Pump: Cap: } pcs</p>	<p>3491.36H1 BREEZE 100ml 9424.0AA 9805.15A 2.800</p>	<p>3491.36H1 SPIRAL 100ml 9424.0AA 7015.20A/9805.05A 2.800</p>	<p>3491.36H1 SPIRAL 100ml 9424.0AA 7015.20A/9805.16A 2.800</p>	<p>3491.36H1 SPIRAL 100ml 9424.0AA 7015.20A/9805.21A 2.800</p>	<p>3491.36H1 STAR 100ml 9424.0AA 7015.20A/9805.03A 2.800</p>
---	---	--	--	--	--